

Name		Roll Number	
------	--	-------------	--



**INDIAN SCHOOL MUSCAT  
MIDDLE SECTION  
FIRST TERM EXAMINATION 2018-19**



**SUBJECT - SCIENCE**

Code:MYSC01

**CLASS: 7**

**Time Allotted: 2 ½ Hrs.**

**16.09.2018**

**Max .Marks: 80**

**General Instructions.**

1. The question paper comprises of **two Sections, A and B**. You have to attempt both the sections.
2. **All** questions are **compulsory**.
3. **All answers should be written in the answer sheet provided.**

**SECTION A**

**1.Fill in the blanks**

**Qns.**

**Marks**

- |   |   |
|---|---|
| a. Green plants are categorised as _____ since they prepare their own food. | 1 |
| b. No medium is required for transfer of heat by the process of _____       | 1 |
| c. The chemical name of vinegar is _____.                                   | 1 |
| d. Leaves have tiny pores called _____through which they exchange gases.    | 1 |
| e. The maximum temperature of the day occurs generally in the _____.        | 1 |
| f. On_____ the World Water Day is celebrated every year.                    | 1 |

**2. Choose the correct answer**

- |  |   |
|--|---|
| a. <i>Amarbel</i> is an example of<br>i) Autotroph      ii) Parasite      iii) Saprotroph      iv) Host  | 1 |
| b. During heavy exercise , we get cramps in the leg due to the accumulation of<br>i) carbon dioxide    ii) lactic acid      iii) formic acid      iv) water  | 1 |
| c. Which option best describes a polar region?<br>i) hot and humid      ii) moderate temperature, heavy rainfall<br>iii) extremely cold climate      iv) hot and dry.  | 1 |
| d. The heating element used in electric iron and hot plate is made up of<br>i) copper      ii) aluminum    iii) nichrome    iv) all of these   | 1 |
| e. The total water<br>i) in the lakes and rivers of the world remains constant<br>ii) under the ground remains constant<br>iii) in the seas and the oceans of the world remains constant<br>iv) of the world remains constant. | 1 |
| f. During waste water treatment, the sludge is decomposed in another tank with the help of<br>i) aerobic bacteria    ii) anaerobic bacteria    iii) aeration    iv) none of these  | 1 |

### 3. State TRUE or FALSE.

- a. Chemical energy is converted into solar energy during photosynthesis. 1
- b. Evaporation of water is a chemical change. 1
- c. All the changes in the weather are driven by the sun. 1
- d. To make a battery of two cells, the negative terminal of one cell is connected to the positive terminal of the other cell. 1
- e. Water shortage is a problem faced only by people living in rural areas. 1
- f. Untreated human wastes are a health hazard. 1

### 4. Give ONE word / term for the following.

- a. The tiny openings or holes present on the sides of insects for gaseous exchange. 1
- b. The average weather pattern taken over a long time at a place. 1
- c. The longer line in the symbol for a cell represents this terminal. 1
- d. A technique of watering plants by making use of narrow tubings which deliver water directly at the base of a plant. 1
- e. This large structure helps a toucan to reach the fruits on branches which are otherwise too weak to support its weight. 1
- f. The scientist who discovered the magnetic effect of electric current. 1
- g. The process of water seepage into the ground. 1

### SECTION B

#### Questions 5 to 19 carry 1 mark each

- 5 Name the pigment that helps to capture sun light during photosynthesis. 1
- 6 Back of refrigerators are always painted black. Give reasons. 1
- 7 When an iron nail is dipped in copper sulphate solution for some time, the nail turns red. Why? 1
- 8 How do frogs breathe in water? 1
- 9 Name **any two** elements that determine the weather of a place. 1
- 10 What is the use of a fuse? 1
- 11 You have been asked to maintain a garden. State **any two** measures you will adopt to minimise the use of water. 1
- 12 Manholes are provided at the junction of sewers. Why? 1
- 13 The red-eyed frog has sticky pads on its feet. Why? 1
- 14 Draw the symbols for the following:- a) an electric bulb b) a switch in OFF position. 1
- 15 State **any one** factor that reduces water infiltration. 1
- 16 What is sewage? 1
- 17 Name **any two** devices based on the magnetic effect of electric current. 1
- 18 State **any two** factors responsible for the depletion of water table. 1
- 19 What is the function of skimmer in a Wastewater Treatment Plant? 1

#### Questions 20 to 29 carry 2 marks each

- 20 Write the complete word equation for photosynthesis. 2
- 21 Woollen clothes keep us warm in winter. Give **two** reasons. 2
- 22 Describe how crystals of copper sulphate are prepared. 2
- 23 Write **any two** differences between aerobic and anaerobic respiration. 2
- 24 State **any two** adaptations seen in polar bears. 2
- 25 State **any two** ways by which electromagnets can be made more stronger. 2
- 26 State **any two** measures that can be taken to minimise the clogging of drains and reduce pollutants in sewage. 2
- 27 Write **any two** differences between conduction and convection. 2

- 28 Write the **complete word equation** for each of the following chemical reactions in your answer sheet. 2
- a) Magnesium oxide + water →  
b) Carbon dioxide + lime water →

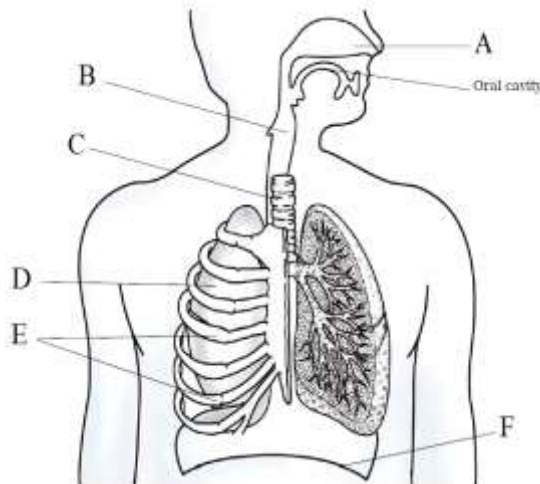
- 29 Name **any two** onsite sewage disposal systems suitable for rural areas. 2

**Questions 30 to 34 carry 3 marks each**

- 30 a) What is a symbiotic relationship? 3  
b) What is the function of alga in lichens?  
c) How does *rhizobium* help leguminous plants?
- 31 Answer the following questions about a clinical thermometer. 3  
a) State its range.  
b) Give the function of its kink.  
c) State any one precaution you will take while handling it.
- 32 a) Burning of paper is a chemical change. Give reasons. 3  
b) State **two** conditions necessary for rusting to occur.  
c) Give **any two** ways to prevent rusting.
- 33 What is the significance of the following adaptations in an elephant? 3  
a) It has a long trunk.  
b) It has large ears.  
c) It has a pair of tusks.
- 34 Ashok made an electric circuit using a cell holder, a switch and a bulb. When he put the switch in the 'ON' position, the bulb did not glow. State **atleast three** possible defects in the circuit. 3

**Question 35 carries 5 marks**

- 35 Observe the diagram shown below and answer the questions. 5



- a) Label the parts marked as A, B, C and F  
b) In which direction does part E move during inhalation?  
c) Define the term breathing rate.  
d) State **any two** bad effects of smoking on our health.

End of the Question Paper.